

## Body Sculpts



- 1) Misaki Body Sculpt (2006)
- 2) Model Behavior / Nu Face Body Sculpt (2006) – altered to Hand Speak system in 2009.
- 3) Monogram Body (2009)
- 4) 2.0 Body Sculpt (2006) -- altered to Hand Speak system in 2009
- 5) Expressive Body Sculpt (2004)
- 6) Original Body Sculpt (2002-3)

Until 2009, Integrity has used 6 different female body molds in their high end 1/6 scale doll lines. They are arranged in the picture above from least to most breasts (1 & 2 same, 4 & 5 same). Following are front and back pictures of each mold, their corresponding markings, which collections/years used them, their articulation points, and mobility range. Around 99% of the dolls come with painted nails in hands and feet; in 2004 they started using the French Nail Style in some dolls. The 2.0 Body Sculpt (not Hand Speak) is available for purchase by itself directly from Integrity Toys since 2008, for \$45 each – 4 skin tones are available.

Height order: 3 & 4 tallest, followed by 2, then 5 & 6 are the same, with 1 being shorter than 5 & 6 only because it has flat feet.

In the bodies' torsos there is a stainless steel nut that adds weight to the dolls.

## Original Body Sculpt

Used in the main Fashion Royalty line – early collections; it is 11.5 inches tall.

**Body Markings** in right rear cheek: “© 2002” Second Line: “Integrity / Wu”.

**Collections:** Premiere, Mauve Absolue, Exclusive Representative, Sheer Perfection, Fashion Royalty 1<sup>st</sup> Event, Graphic Flirtation. Basically all dolls from 2002 until 2004, with the exception of Voyages Collection’s dolls, an exception to this is Haute Luxuries Veronique – while part of the Voyages she has the original body mold.

**7 Articulation Points** – neck, shoulders, legs, knees.

**Mobility** – arms turn, but overall only 90 degree angles permitted.

**Detailing:** Detailed hands and feet, hands have a few separate fingers, toes are all together. It has a well defined collarbone, nipples, shoulder blades, ankles, elbows.

**Notes:** With time the joints become stiff, neck joint becomes brittle and some have broken with gently handling, also the torso has become darker in many instances.





## Expressive Body Sculpt

**Height:** same as the first body – 11.5 inches. Body is overall a bit slimmer, slightly less chest.

**Body Markings** in left butt cheek corner: “© 2004” Second Line: “Integrity / Jason Wu”.

**Collections:** in 2004 the Premiere Voyages, in 2005 all dolls (Black Lacquer Voyages, Exotic Fusion, Agent Provocateur Voyages, Exclusive Dolls, Royaltini Event, Atelier Poesie Vanessa) and the last is 2006 Final Chapter Voyages.

**15 Articulation Points** – neck, torso, waist, shoulders, top arm, elbows, hands, hip, knees.

**Mobility** – arms and top arm joint turn, hip joint has side mobility and up/down movement, waist rotates, torso swivels, neck rotates and moves up/down. The elbow, hand, and knees move up/down up to a 90 degree angle.

**Detailing:** same as the first body, except she now has more articulations.





## 2.0 Body Sculpt

**Height:** 12 inches. Torso section remains the same.

**Body Markings** in left butt cheek: “© 2004” Second Line: “Integrity / Jason Wu”.

**Collections:** 2006 onward; every doll from Modern Pompadour collection forward has this body, except the Model Behavior line, Nu Face line and Hommes.

**13 Articulation Points** – neck, torso, waist, shoulders, elbows, hands, hip, knees.

**Mobility** changes –Knees and elbows now rotate as well as moving up/down. Also the hand sculpt changes, the big toe is separate (early shoes will not fit them).

**Replacement Bodies** – offered 2008 onward, sold at the W Store, \$45 each (temporary sale of \$21.50), in 4 colors: AA, Caucasian, Latina, Japan. They come with no nail polish, and marked with a silver painted W in the right buttocks. → Come in a small brown shipper: “FR NUDE BODY” & (Body color). Instructions for head switching: [http://www.fashionroyalty.com/FRheadswitch\\_instructions.jpg](http://www.fashionroyalty.com/FRheadswitch_instructions.jpg)



Picture by Integrity Toys



**Body Material:** Changed from Poly Vinyl Chloride (PVC) used in the arms and legs (a very porous material - easily absorbs fabric dyes - less durable in the long run) to the nearly indestructible ABS (a high impact material that is far more color-fast and stronger than PVC but involves a different construction method, hence the joint changes. ABS is lighter than PVC, even though it is higher quality and more impact resistant, thus the difference in weight between old and new bodies.<sup>1</sup>

<sup>1</sup> Integrity Toys Website: News 2006 Archive. [www.integritytoys.com](http://www.integritytoys.com)

## Model Behavior & Nu Face Body Sculpt

**Height:** 12 inches.

Sports a more girl like body that is shorter and less developed than the Fashion Royalty dolls.

**Body Markings** in the corner of the left butt cheek: “© 2005” 2<sup>nd</sup> Line: “Integrity / Jason Wu”.

**Collections:** start in 2006 -- all Model Behaviour & Nu.Face collections.

2 Premiere Dolls, Power Couple GS FAO Exclusive, 4 Model Behavior – Cult 2007, Checking Out GS, Painted Black GS BIC Exclusive, Club Exclusives Costume Drama & Grand Arrival, 2007 Convention – Picture This, Making a Scene & Odd Girl Out, 2008 4 Nu.Face Agency, 2008 Convention – Masterpiece Theatre & Elements of Surprise Twins, Illusionist Integrity Exclusive, 2009 3 Nu.Face On The Fringe, Convention Morning Dew.

**12 Articulation Points** – neck, torso, shoulders, elbows, hands, legs at the hip, knees.

**Mobility** – knees, hands, elbows, arms fully rotate and bend 90 degrees; legs move 90 degrees up-front, around 70 to the side, almost nothing backwards.

**Detailing:** Detailed hands and feet with nail polish, hands have a few separate fingers, toes have the big one separate. It has a well defined collarbone, small ‘pointy’ breast with nipples, abs, bellybutton and shoulder blades.





## Monogram Body Sculpt

**Height:** 12 inches.

Has a more model-like thin body, less developed than the regular line, but more than Nu.Face.

**Body Markings** in left butt cheek: “© 2009” Second Line: “Integrity / Jason Wu”.

**Collections:** Monogram Collection, including 2009 IFDC dolls.

**12 Articulation Points** – neck, torso, shoulders, elbows, hands, hip, knees.

**Mobility** – almost all the joints turn 360°, torso swivels, knees, elbows and hands also turn back / forth to 90° angles (elbows a bit more).

**Hand Speak:** Removable / exchangeable hands. **Detailing:** Detailed hands and feet, hands change among the dolls, big toe is separate. It has a well defined collarbone, round breast with nipples, shoulder blades, spine, abs, and bellybutton.



## Misaki Body Sculpt

**Height:** 11.5 inches with the feet in the flat position.

**Body Markings** in left rear cheek: “© 2005” Second Line: “Integrity / JasonWu”.

**Dolls:** Red Riding Hood Yuri, Wolf Kumi, In Yuzen Blossom Giselle.

**Skin Tones:** Yuri & Kumi FR1, Giselle FR2.

**14 Articulation Points** – head, shoulders, elbows, hands, torso, legs, knees, feet.

**Mobility** – torso swivels, arms/hands/shoulders/feet turn 360 as well as bend to 90 degrees angles; knees bend to 90 degree angles and rotate a bit left to right; legs can raise it in the front almost to 90 degrees and turn it to the side raised almost 90 degrees from the front position; can't be raised backwards.

**Detailing:** Detailed hands and feet, hands detailed individual fingers (2 are together), all toes present with the big one separate, all fingers/toes have nail polish. It has a well defined collarbone, shoulder blades, spine, nipples, abs, and bellybutton.





## Hand Speak System

In 2009 Integrity modified the 2.0, Nu.Face, and Homme bodies to allow interchangeable hands, the rest of the body remained the same. The Monogram body was released from the start with this feature. The hand can be changed, it also fully rotates and moves up/down. All the Female Hands use the same size molds – meaning you can use 2.0 / Nu.Face / Monogram hands interchangeably among the body types. Below I describe and code the hands, in each doll with this system a line in the checklist will have first the hand that came on her, followed by the additional ones if any. EX: a basic doll that comes with 3 hands, I would write in the checklist “H1, H1G1, H3”, meaning it comes with the H1 on, but also has the H1 with G1 painting and H3 in the drawer. At the end of this section I will post a list of all the dolls and the hands each comes with.

**H1:** Fingers mainly flat w/ the pinky raised in the right hand.



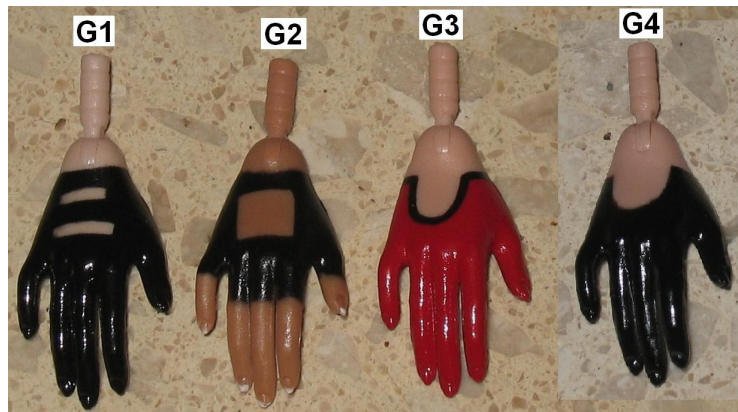
**H2:** Both hands w/ 3 fingers very curled inwards.



**H3:** 3 fingers lightly curled in left, right fingers are arched, all the fingers are individual.



**H4:** all 4 main-fingers together



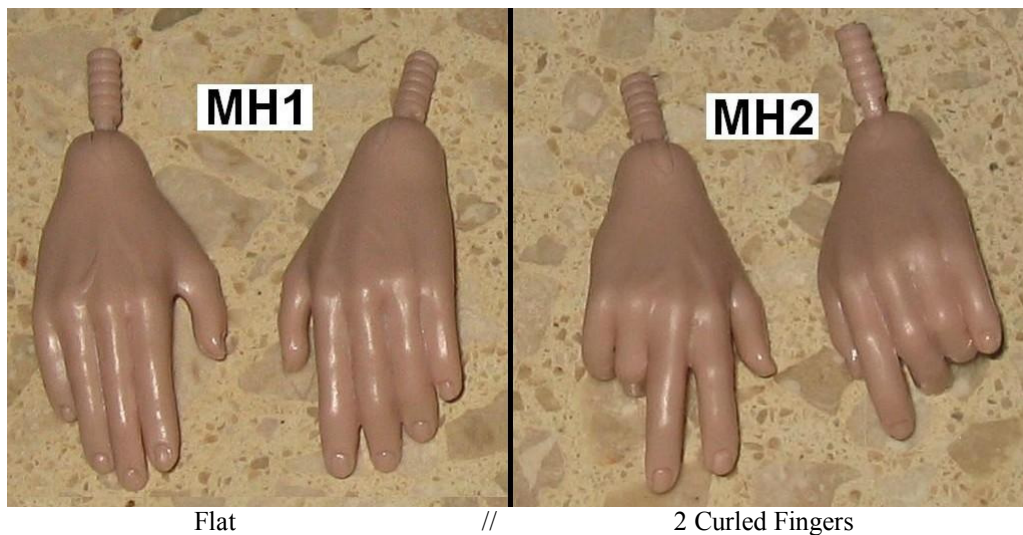
## Hommes Body

The Hommes collection has only featured one body structure, is 13" tall. It has 14 articulation points: neck, torso, hands, elbows, shoulder arm, feet, knees, legs at the hip.

**Body Markings** on the corner of the left butt cheek: "© 2006 JWU BY IT"



In 2009 it was modified for hand speak, so far there are 2 hand molds.



Flat

//

2 Curled Fingers



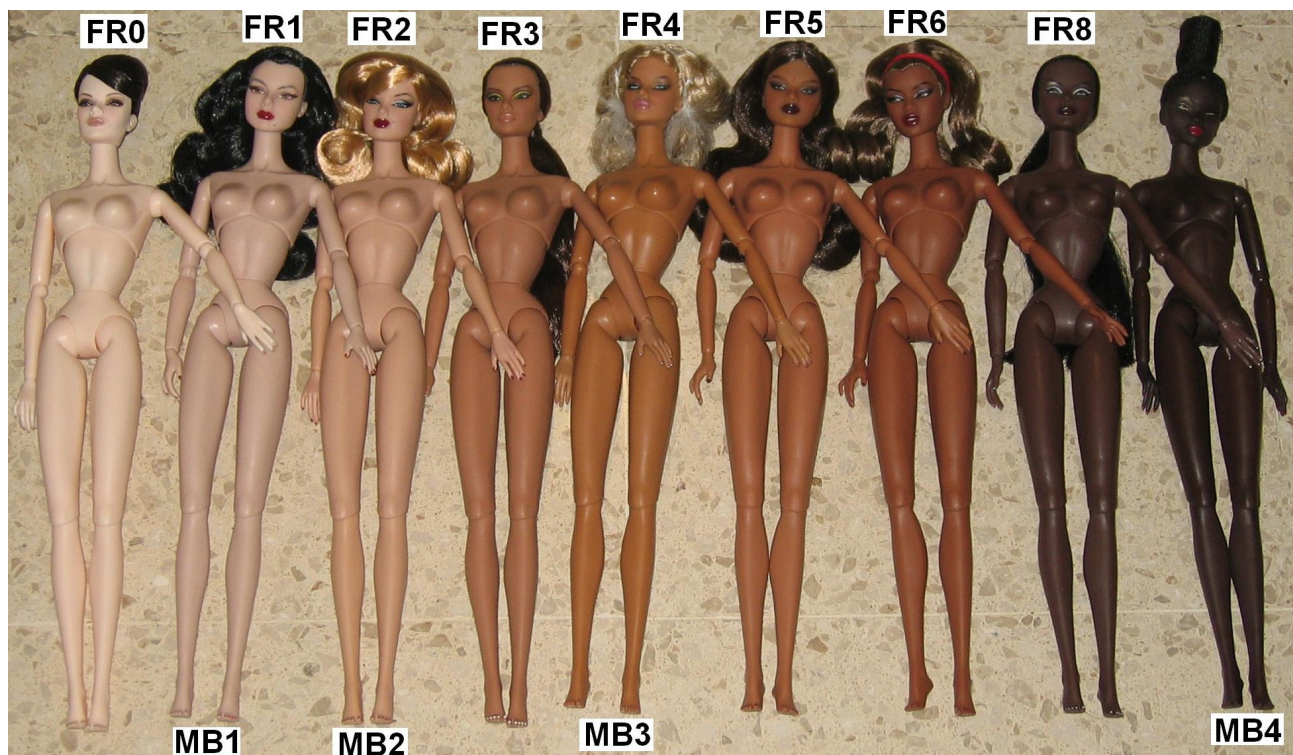
## **Head Markings**

The head markings stay the same, regardless of the body, where // indicates the next line.

- Veronique 1<sup>st</sup> Head Mold: “Integrity / WU 2001”
- Veronique 2<sup>nd</sup> Head Mold: “\_\_\_\_\_”
- Adele 1<sup>st</sup> Head Mold: “Integrity / WU 2001”
- Adele 2<sup>nd</sup> Head Mold: “© 2004 // Jason Wu/ // Integrity”
- Kyori: “© 2004 // INTEGRITY / WU”
- Vanessa: “© 2004 // Jason Wu/ // Integrity”
- Isha & Luchia: “© 2005 // Jason Wu/ // Integrity”
- Agnes: “© 2006 // JWU BY IT”
- Eugenia: “© 2007 // JWU BY IT”
- Natalia 1<sup>st</sup> Head Mold: “© JASONWu // 2005 INTEGRITY”
- Natalia 2<sup>nd</sup> Head Mold: “© 2008 // JWU BY IT”
- Tatyana & Jordan: “© 2008 // JWU BY IT”
- Dania Zarr (also New Mold Lana Turner): “© 2008 // JWU BY IT”
- Pierre: “© 2006 // JWU BY IT”
- Francisco: “© 2006 // JWU BY IT”
- Darius: “© 2007 // JWU BY IT”
- Lukas: “© 2007 // JWU BY IT ”
- Takeo: “© 2008 // JWU BY IT”
- Erin: “© 2005 JWU/IT”
- Nadja & Colette: “© 2005 JWU/IT”
- Ayumi: “© 2007 // JWU BY IT”
- Giselle: “© 2008 // JWU BY IT”
- Eden / Lillith / Kumi / Yuri: “© 2008 // JWU By IT”
- Monogram: “© 2008 // JWU BY IT”
- Dominique Makeda: “\_\_\_\_\_”
- AG Clone: “\_\_\_\_\_”

## Female Characters - Skin Tone Chart

per Em`lia's <http://skintonedatabase.blogspot.com/>



Code	Color -- Description	Default Dolls	Exceptions	Donors
FR0	<u>Porcelain</u> -- Extremely pale, warm peachy tone, translucent quality	Tatyana	Queen V	na
FR1* MB1	<u>Japan / Pale / Alabaster</u> -- Regular pale skin w/ grayish hue	Agnes -- Luchia Lana New Mold Ayumi -- Erin Eden -- Lillith Yuri -- Kumi	<u>Kyori</u> : Brighter Side & Flight Pattern <u>Vanessa</u> : True Royalty, Color Therapy <u>Veronique</u> : Mastermind <u>Statuesque</u> <i>--2.0 Replacement Available</i>	MB1 DG1 MZ1 M1
FR2* MB2	<u>White / Blush / Natural Silk</u> -- Regular Caucasian, warm tone w/ a peachy hue <i>--2.0 Replacement</i>	Dania -- Eugenia Kyori -- Vanessa Veronique -- Giselle	<u>Luchia</u> : Bewitching Hour Old Mold Lana > pinkish Life Ball, Best Drama	MB2 DG2
FR3*	<u>Latina / Amber</u> -- Tanned skin tone w/ pink hue <i>NOTE: old &amp; new Nats have tiny difference.</i>	Natalia <i>--2.0 Replacement Available</i>	<u>Agnes</u> : Firefly <u>Kyori</u> : Buena Sera <u>Erin</u> : Making of...	MZ3
FR4 MB3	<u>Tan / Cashmere</u> -- Regular tanned w/ golden hue	Colette	<u>Adele</u> : Paparazzi Bait <u>Eugenia</u> : Going Public <u>Vanessa</u> : Miami Glow, Cruise Control <u>Veronique</u> : Body Double	MB3 DG4
FR5	<u>Indian</u> -- Darker tanned w/ yellow hue	Isha	na	MZ4
FR6	<u>Black 1</u> -- Afro-American, warm hue	Adele	<i>--2.0 Replacement Available</i>	DG5
FR7	<u>Black 2</u> -- AA w/ cold yellowish hue	Josephine Baker	na – her head is tad darker	na
FR8	<u>Black 3</u> -- Dark AA, lighter than MB4	Jordan	<u>Adele</u> : Muse	MZ6
MB4	<u>Ebony</u> -- Bitter chocolate brown tone w/ cold hue – darkest color IT has.	Nadja	na	na

\*Some variations in skin tone may occur due to batch differences. EX Life Ball & Best Drama are a bit pinker than FR2. Also some 1<sup>st</sup> Body Mold doll's skin tone has started to yellow with time (consensus is it can not be stopped and that heat/sun light might make it turn faster). Photo: all 2.0 FR, FR3 & 8 w/ Hand Speak; MB4 Nu.Face.



## Boxes and Packing

Original Packing: Each doll and fashion is exquisitely packed in beautiful boxes that close with magnets. Each item comes carefully packed with an individual shipper box indicating the reference number, name and collection. (1) The item box comes inside a plastic bag. (2) The boxes have great graphics. The doll boxes have a center rectangular cubicle in which there is a tissue/wax paper closure on top of the liner that opens with side flaps. (3) Under the liner, the story card and numbered certificates are found. In the doll's box compartment there is a gel silicone bag to absorb humidity.



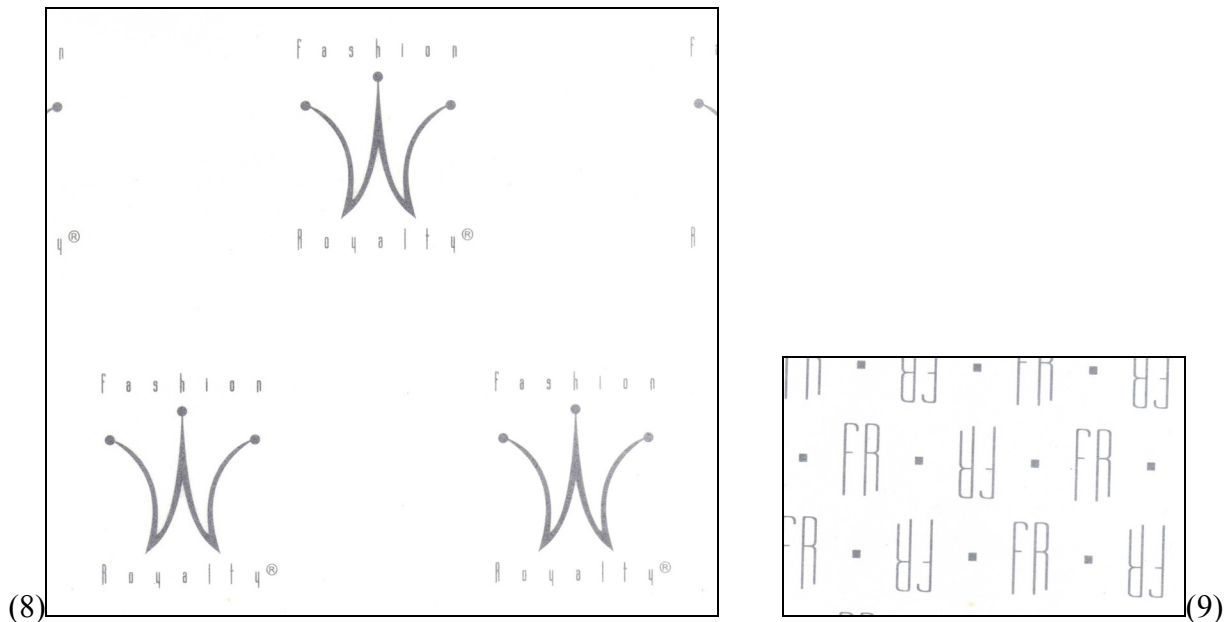
The shipper boxes changed between mid 2004 and the beginning of 2005 (4). They remained white but opened with flaps in the front and lifting the top; instead of by the side. In 2006 they changed to how they are now; brown, opening at the top and the bottom, with the item's information on the side (5).



The boxes suffer changes as well. The graphics and colors tend to change between collections and even characters (see next page for several examples) the most common background color is white. The format of the box also changes. First they create a pocket to put the story card & COA. In the voyages collections they stitch all the accessories on the left side with the box opening like a book – and have a beige/brown color. In 2006 there is a drastic change; there is a white cover that you have to remove up and then inside the box opens with a simple book flap. Also, instead of the shoe boxes and accessories sewn in the liner there is a drawer to put all the little bits (6). In 2007, they eliminated the cover you had to remove and went back to the old book flap opening that closes with magnets, but they kept the drawer and thus eliminated the shoe boxes. As an exception they use big shoe box (pictured at the end of that section) in fashions instead of drawers.



The tissue/wax paper also changes, at the beginning it had the W logo (8). The Voyages collections do not have it. In 2006 they didn't use the tissue paper. In 2007, it came back but it was plain white. In 2008, they put back an FR logo on it (9), but now it is not a full tissue paper going under the liner but rather 2 pieces one in each side – still has the same visual effect.



These two pictures are the actual size.

In the next page there are several versions of the boxes. Any exclusive/special doll or outfit that has a particular box type will try to include a picture of the box in its corresponding page. The Monogram Collection has special packing (tissue paper, ribbon ties, etc.); it is detailed in the first page just after its mini-index in 2009.



**Different Versions**



Early Kyori Packing



Early Isha Packing

**Boxes in Sheer Perfection & Graphic Language:**



Outside



DOLL

Open



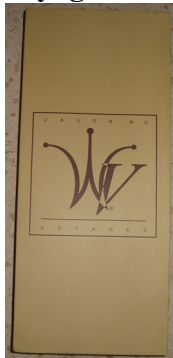
Outside



OUTFIT

Open

**Voyages Boxes:**



DOLL



Outside



OUFITS

Open



(6) White cover had to be pulled up



2008 – notice the long brown drawer





**Fashions with Small Hats** came with a distinctive **hatbox**. Like the one pictured on the left. Outfits/dolls that come with it are: Silver Society Veronique, Suited Luxury Adele, Toast of Paris Luxury Wear and Toast of Paris Veronique dressed doll.

**Shoe Boxes:** In the early collections all shoes even the ones that came in luxury wear (unless the doll was wearing them) came inside a shoe box. They changed in time:



2002 - 2003



2004



Kyori only



Voyages



Isha Only



Royaltini 2005 convention.



Since 2006

# Paperwork: Story Cards, Sketches, Certificates of Authenticity, Instructions, Warranty, Miscellaneous

## Story Cards & Sketches

In the Premiere Collection (2002) the sketch came in the corner bottom part of the story card, changing to half the card in 2003 and in the collections of 2004 and 2005 the sketch came on the front of the card and the story on the back. All these cards fit in the story portfolio sold in the Premiere Collection [6 portfolios are needed to have them all stored, one card per slot]. The only exceptions at that time were the four Voyages collections released 2004-2006 which have a different sized card. In 2006, the shape of the cards changed again and stayed the same until the end of 2007. Some dolls in these two years had an online link to the story instead of having it in the card. In 2007 some of the story cards were available online – not yet released: all Style Du Jour Collection, W Club’s Costume Drama Giselle and Grand Arrival Colette, and Atelier’s A Brighter Side Kyori. <http://www.fashionroyalty.com/story/> In 2008, they eliminated the sketch in the regular line collections and the story came in a 2-sided round card inside a cover; the Nu.Face line come with a different sized picture/story card inside a cover; exceptions are the Moods & Heist Collections. In 2009, the story card’s format changed again. There are several exclusive dolls that have no story cards. The Monogram Collection, the furniture and several outfits do not come with them either, some came with sketches, outfit tags or detailed information in the box, see the contents checklist for more detailed information of a particular item – including the specific story title if there is a story card.

<p>Style 1: 2002</p>	<p>Style 2: 2003</p>	<p>Style 3: 2004-2005 [Front / Back]</p>	<p>Voyages Collection [Front / Back]</p>



<p>2006 to 2007 [Front / Back]</p>	<p>2008 – Regular Line Items</p>	<p>2008-2009 - Nu Face</p>
<p>2008 - Moods Collection</p>	<p>2008 - The Heist Collection</p>	<p>2009 - Perfect Bound Collection</p>

### Certificates of Authenticity (COAs)

Every item in the collection comes with its own COA, the hand written information is: the abbreviation for the item’s name<sup>2</sup>, which number is that item in the series and the total number of items made. At the beginning they were packed individually, in 2004 they started to pack them with the Sketches/Story Cards – a few of the early dolls came individually. All 4 Voyages collections come with a different style COA. The Royaltini 3<sup>rd</sup> Event Collection and The Loft also have special COAs. In 2006, the shape of the COA changes drastically and starts to be packed with a One Year Warranty Card and has remained this way.

<sup>2</sup> This is detailed in the last bullet of each item’s Contents Checklist: “COA: \_\_\_\_\_ # # #”

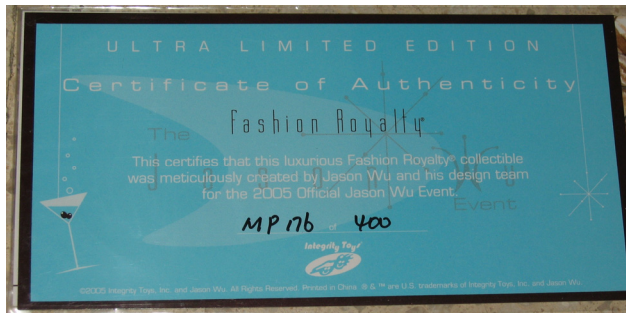




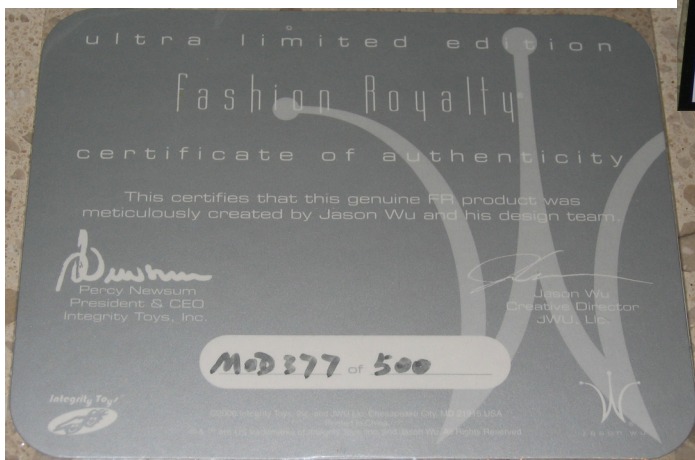
← Used from the beginning of the collection until the end of 2005.

The only exceptions are:

(1) Used in 1 four Voyages Collections. →



(3) Used in The Loft Collection (2005/6). →



← (2) Used in the Royaltini Convention Exclusive Collection in fall 2005.

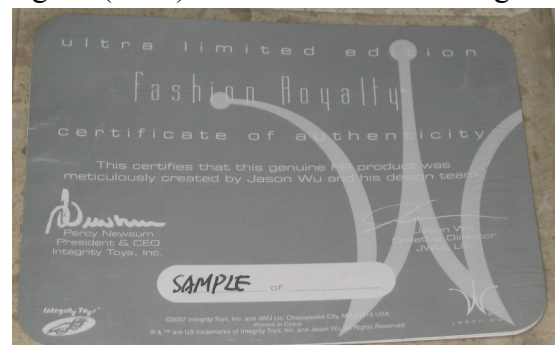


← After 2006 they use this COA format .

The only exceptions are:

- (1) Japan Market Exclusives
  - (2) Monogram Collection
- See those doll's individual pages for pictures.

**Curious Detail:** I received a doll – The Royal Weiss Agnes (2007) that had a COA reading only ‘SAMPLE’; after posting in the W Club it was reported one of following dolls also came with one: Face Time Eugenia, Dark Narcissus Kyori, High & Mighty Darius, a Natalia. Two of those were won in a Convention Raffle. These dolls are not prototypes; usually they are made the same as the production dolls, but they're the very first dolls. They might be dolls that Integrity uses for ToyFair displays or promotional use.



## Other Paperwork

Any additional paper work is listed in the contents checklist of the item.

### Instructions:

Suitcase opening instructions every item that had this type of closure in bags/suitcases. They were usually items in the Voyages Collection. → →

Also items in both The Loft collections tend to come with instruction sheets.



### Stain Warnings:

Purple Pose Isha & Red Zinger Dania. Both warn that possible staining might occur – for Isha with the outside of the top and skirt, for Dania the neck area; they advise on how to prevent staining and clarify that the warranty will not cover replacement bodies for these causes. Dania comes with a plastic protector for the neck.

### Warranty Cards:

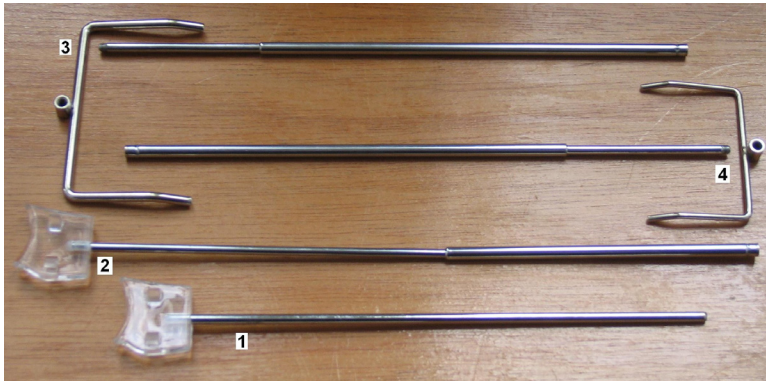
In 2006 they started including a warranty card:



A few dolls have special versions of this card, they are the Monogram Collection, and some Japanese Market Exclusives, the exception cases are picture in the doll's page.



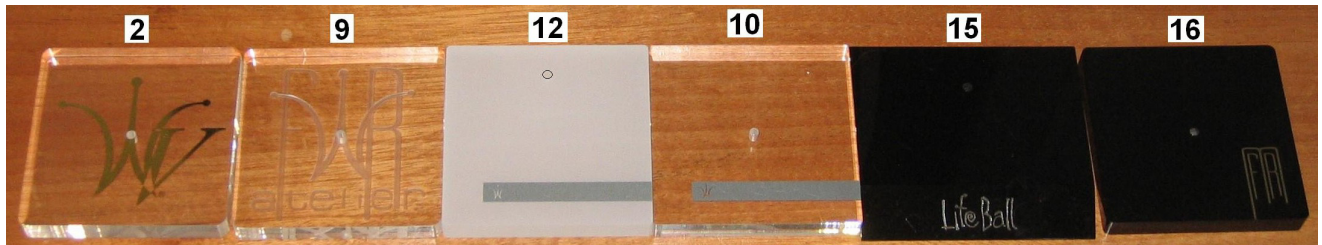
## Stands



#3 & #4 use the same rod, which extends up to 12”.

## Rods:

#1 and #2 are for all the female characters. It changed in year 2004 from the fixed #1 shown to the #2 extensible one which is a bit thicker, in the picture it is fully extended (8 ½ inches). #3 is for the male characters #4 is for Life Ball doll and the Misaki body dolls.



**Base Stand 1:** “W” Used in all the collections from the Premiere in 2002 until 2005, inclusive. Exceptions: dolls using Base Stand 2 (those in the Voyages collections).

**Base Stand 2:** “WV” All collections FR Voyages: 2004 Premiere, Black Lacquer and Agent Provocateur in 2005, and The Final Chapter in 2006. Exclusives: Haute Luxuries FDQ Giftset, IFDC’s Born to Gamble Kyori, and Vibrant Dimension Veronique MFD Royaltini Convention.

**Base Stand 9:** “FWR Atelier” Used in the 3 Atelier Collection dolls – Poesie Vanessa (2005), True Royalty Vanessa (2006), and A Brighter Side Kyori (2007).

**Base Stand 10:** W Club Exclusives 2007, Style Du Jour (2007), all 2008 dolls except Homme.

**Base Stand 11 & 12:** Homme Dolls from the beginning until 2008 used stand #11 [“FR Homme”], in 2008 the three Homme dolls used stand #12 [“W” in the line]. Exceptions are: special convention collection dolls that use the stand base for the collection and gift sets editions.

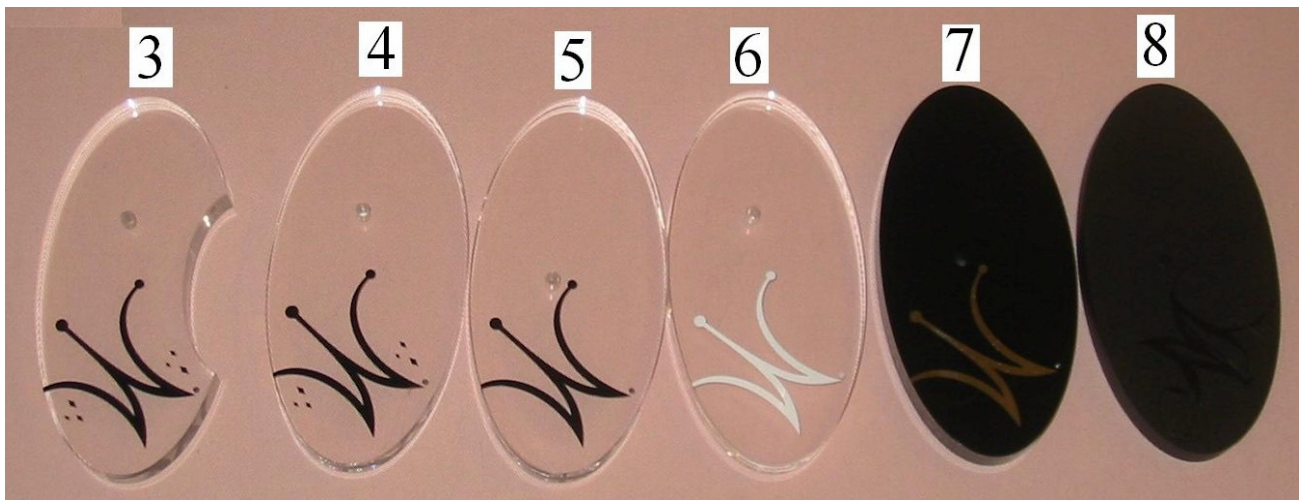
**Base Stand 13:** reads Fashion Royalty, came in the Sound Advice Gift Set (2006) with base #5.

**Base Stand 14:** reads “Fashion Royalty”. Comes in GS: In 2006: Black as Night – Power Couple. In 2007: Checking Out – Painted Black. They have #8 base and #14 for the girl.

**Base Stand 15:** Exclusive to Life Ball Monogram Collection Doll; comes with rod #4.

**Base Stand 16:** Monogram Collection Dolls, except Life Ball.

**Base Stand 17:** Japanese Exclusives with the Misaki Body, uses rod #4. (Kumi, Yuri, In Yuzen Giselle)



**Base Stand 3:** In 2006: Modern Pompadour (Basic Dolls only)

**Base Stand 4:** In 2006: Modern Pompadour (Dressed Dolls only) – Miami & Natalia Prototype – W Club Exclusives – FR in Stereo Hi-Fi 3<sup>rd</sup> Convention (Agnes & Vero Centerpiece only) – Saks Agnes Exclusive – IFDC Veronique’s. In 2007: Wicked Agnes.

**Base Stand 5:** IFDC’s Luchia (2007) & Cult Culture’s Dressed Dolls (2007), and one of the base of the Sound Advise Gift Set (2006).

**Base Stand 6:** Cult Culture Basic Dolls (2007) and FAO’s Spectacular Eugenia.

**Base Stand 7:** The Royal Live 4<sup>th</sup> Event Collection (2007), including the Gift Set.

**Base Stand 8:** [has M-Missima logo] Model Behavior regular line 2006 and 2007.

*The stands assembled:*





## Tags

There are several items that identify the Integrity brand and Jason Wu as the designer. Every doll comes with a **hand tag**, they change throughout time.



All the tags say “jason wu” on the front (under the logo) except #2. #1 and #2 are clear plastic, the rest are cardboard folded at the top and glued together in the squared part holding the string loose in the loop on the top. On the back #3 to #5 have the following: On the back of #6 to #8 it says centered “Made in China”.



#1 and #2 are used from the premiere until the end of 2005. Where #2 is used only in the Voyages Collection dolls, including: Haute Luxuries GS, IFDC’s Born to Gamble Kyori and Vibrant Dimension Veronique DD of Royaltini Convention, and the 2 Voyages dolls of 2006 [same as the stands]. Exception: Poesie Vanessa, uses Atelier Collection Hand Tag (below).

#3 is used in 2006 for almost all the dolls except:

- True Royalty Vanessa uses the Atelier Collection Tag
- #4 is used in Dressing the Part Agnes (2<sup>nd</sup> Club Doll).
- #5 is used in the IFDC dolls for 2006.

#7 is used in the 2007 dolls with the exception:

- #4 is used in Wicked Valentine Agnes (FAO Event Exclusive).
- #6 is used only with Colette of the Painted Black BIC Exclusive Gift Set.
- #6 modified back reads as #3 to #5 – used in A Brighter Side Kyori.
- #8 is used only in all the dolls for the 2007 FR 4<sup>th</sup> Convention The Royal Live Collection.

#5 with the back saying only “Made in China” is used in all 2008 & 2009 dolls, except:

- #7 is used in the 4 Basic Metallic Close-Up Dolls & the 2 Australian Convention Agnes.
- Nu.Face Fantasy Collection -- Kumi & Yuri (2008).
- In Yuzen Blossom Giselle & Life Ball have NO hand tags (2009).



Atelier Collection



Nu.Face Fantasy Collection



Monogram Collection

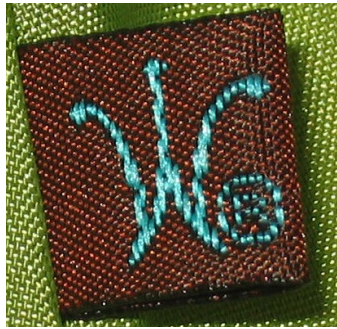


In at least one piece of every **fashion**, there is a tag with the “W” insignia, which resembles photo (a). Only one collection has a different tag – Royaltini FR Convention Collection from 2005 (b). Finally (c) was used in 2009 only came with Life Ball and In Yuzen Blossom Giselle. In the contents list of each item, I write a “-W” next to the name of the piece that has a clothing tag.

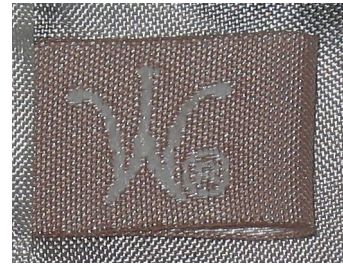
The first two years the Luxury Wear items came with a tag like the one pictured to the right, which states the name of the fashion and the reference number. Outfits that have them are: Toast of Paris, Successful Journey, Fashion Currency, Power Play, and Soir de Paris.



a



b



c

**Shoe branding:** early collections had no markings; in 2004 onward some shoes say “WU”, in 2007 onward some shoes have the W logo in the under sole or inside were the heel rests - as pictured below. If a shoe has the brand it will have a “-W” in the contents checklist.





## Hand Speak System Checklist

<b>Doll</b>	<b>Hand In Body</b>	<b>Pinky &amp; Flat H1</b>	<b>3 Extra-Curled individual fingers H2</b>	<b>3 light curled indv. fingers H3</b>	<b>LifeBall H4</b>
FUTURE.PERFECT BASICS -- Vane, Nat, Jordan, Luchia	H1	XX + H1G1		XX	
Deconstruction Sight Eugenia	H1	XX + H1G2			
Exclusive Interview Dania	H1	XX + H1G3			
Red Zinger Dania	H1	XX + H1G4			
Flight Pattern Kyori	H1			XX	
Optic Verve Agnes	H2	H1G2	XX		
Old is New Giselle	H1	XX		XX	
Style Mantra Eden	H1	XX	XX		
The Making of... Erin	H1	XX	XX		
Life Ball Fashion Doll	H4				XX
Statuesque	H3			XX	
Best Drama	H3			XX	
Black Party	H3			XX	
<b>Doll</b>	<b>Hand In Body</b>	<b>Flat MH1</b>	<b>2 Curled-Fingers MH2</b>	<b>-- MH3</b>	<b>-- MH4</b>
Style Strategy: Lukas	MH1	XX	XX		
In the Mix Takeo	MH1	XX	XX		